

Private Entry From Lobby – Large 14.5 x 14.5' Office
Access to approx 900 SF Balcony from Office



757 JOHNNIE DODDS SUITE 200 MOUNT PLEASANT, SC

UNIQUE CLASS A FEATURES

- Approx 14.5 x 14.5 Large Office –210 SF
- Private Entry off Lobby & Large Balcony
- Signage on Bldg & Office Door Available
- Large Windows & Ample Natural Light
- Custom Paneling & Cabinetry
- Smooth Ceilings with Recessed Lights
- Hardwood Floor in Office; Bluestone Tiles in Common Areas
- Crown Molding & Trim
- Furniture Optional, to Include Conf Table and Desk/Table

Unique Large Balcony



ADAMS & WILSON
DEVELOPMENT

LEASING | Edie DuBose Schaller
843.224.3972
edie@adamswilsondevelopment.com

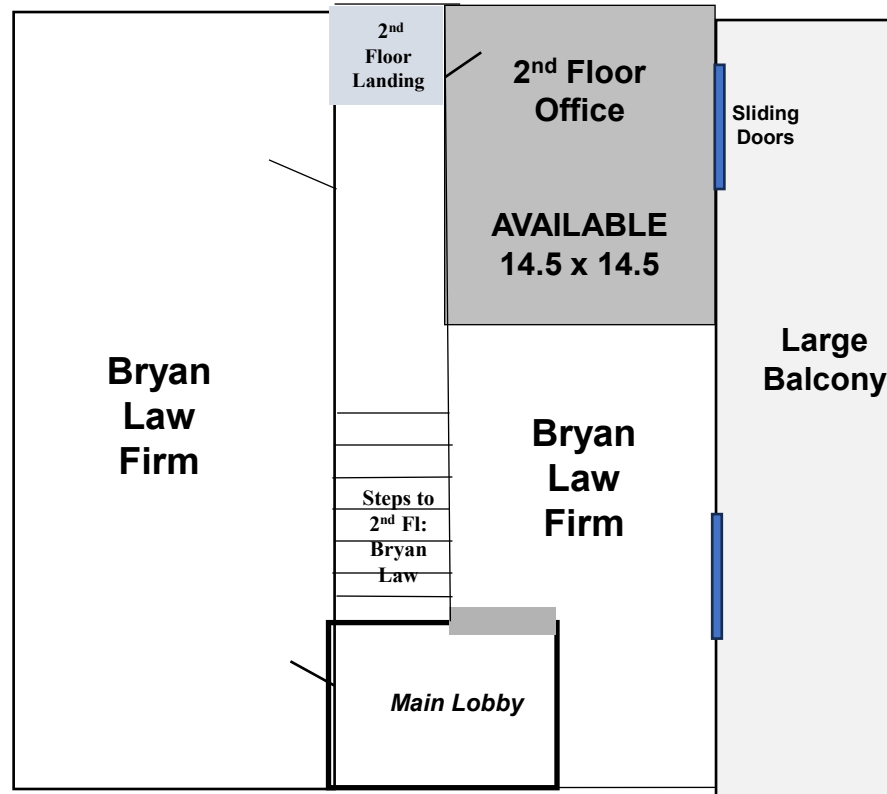
PROPERTY DETAILS

- 1.5 miles to I-526 & Ravenel Bridge
- Ample Parking
- Top Restaurants Nearby
- Now Available, as of Sept 1, 2023
- **\$850 per month with Tenant responsible for Internet/Phone/Janitorial**

***This is a great professional office opportunity for small or growing business with a suite large enough for 1-3 employees.**



Exterior Building Signage Opportunity



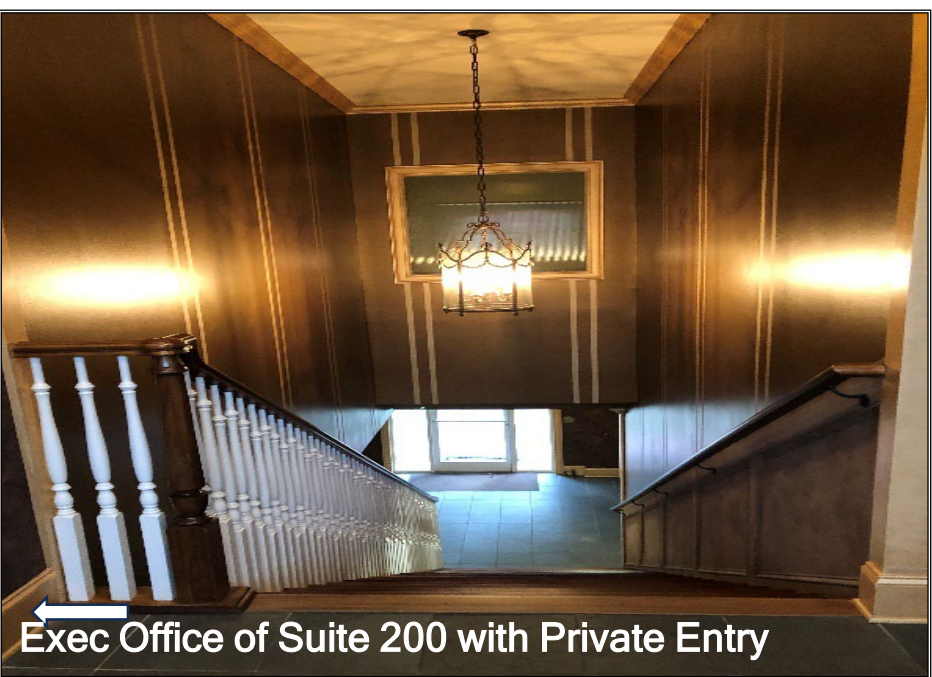
Common area restrooms on 1st floor

1st Floor:
J Benjamin Financial
ReadyNest Counseling
Common Area Restrooms

2nd Floor:
Bryan Law
AVAIL-Portion of Suite 200



Reception Area/
Entrance Lobby



Exec Office of Suite 200 with Private Entry



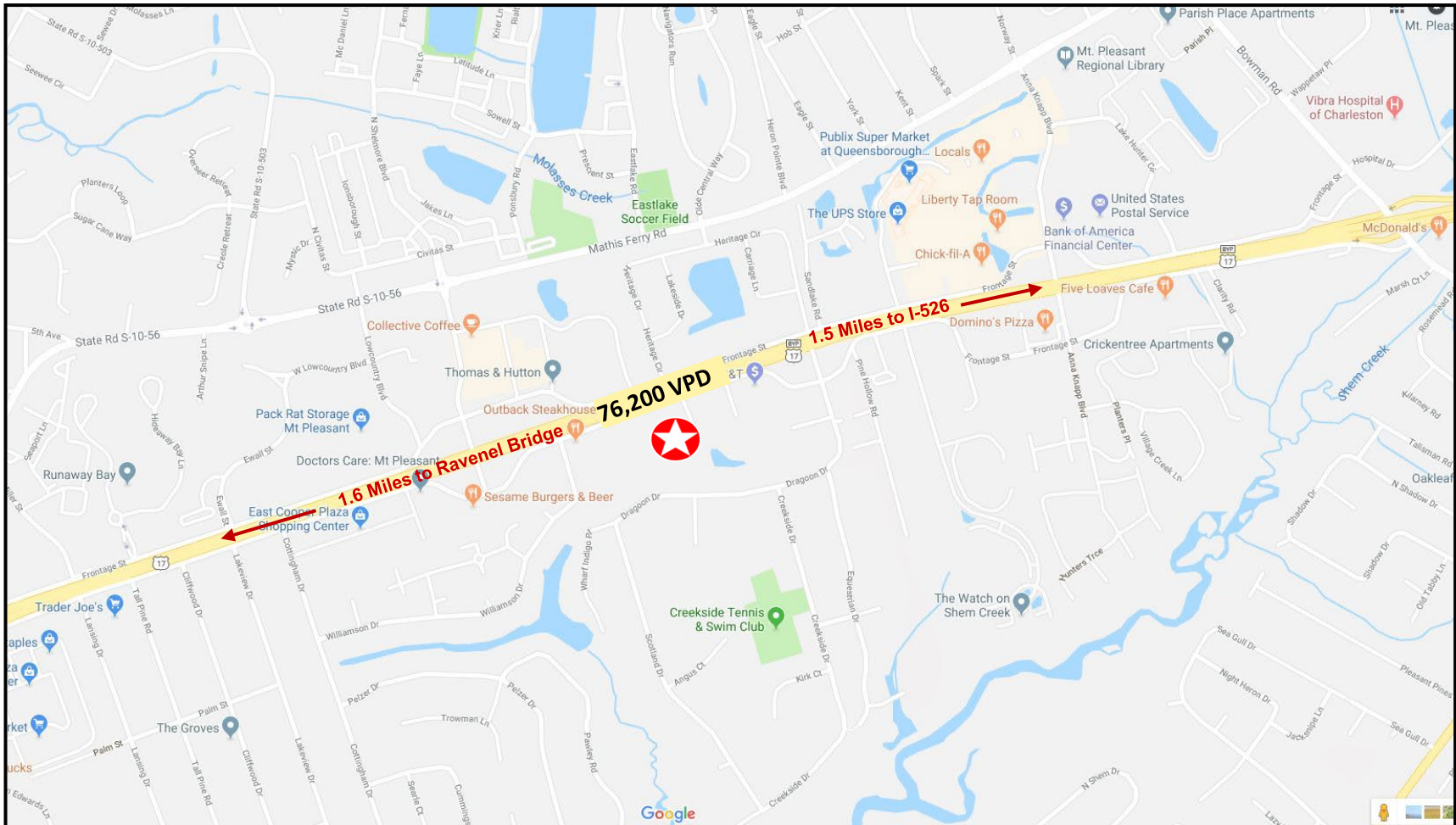
Exec Office of Suite 200



Balcony View & Access

757 JOHNNIE DODDS BLVD, SUITE 200 MOUNT PLEASANT, SC

SITE LOCATION



LEASING | Edie DuBose Schaller
843.216.9990 • 843.224.3972
edie@adamswilsondevelopment.com

All information is from the client and/or other sources deemed reliable and has not been independently verified. No representation, warranty or guarantee, expressed or implied or by operation of law, is made as to the accuracy, reliability, or completeness of this information. This material is submitted subject to errors, omissions, changes, prior sales, or withdrawals, without notice. Square footages/ acreages are approximate. Buyer / Tenant to verify measurements. Landlord reserves the right to approve/disapprove Tenant Use/Concept.